

INSIDE ISRAEL

SITE VISITS

MACHTESH RAMON

Location: Center of the desert in the Negev

- An erosion crater that is approx. 25 miles long and between 1.5-6 miles wide at different points. It is shaped like a long heart.
- The southern edge contains fossils of sea creatures from thousands of years ago.
- It is Israel's largest national park and contains the area's native small animals.
- Khan Saharonim, the remains of a roadside inn from the end of the first century, is found here. This inn was used by travelers as they moved along the spice route.



IF YOU COULD ONLY VISIT 5 SITES IN ISRAEL, WOULD YOU VISIT MACHTESH RAMON? WHY

SOURCE EXPLORATION

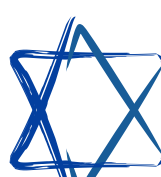
בראשית כ"ב:ד'

בַּיּוֹם הַשְּׁלִישִׁי וַיִּשָּׂא אַבְרָהָם אֶת־עֵינָיו וַיִּרְא אֶת־הַמָּקוֹם מֵרֶחֶק:

On the third day, Avraham lifted up his eyes and saw the place from afar.



There is a story told about Rabbi Shimshon Refael Hirsch. Towards the end of his life, he surprised his students by taking some time off and going on a trip to Switzerland. They inquired as to why he was putting such importance on taking a vacation. He responded "When I stand shortly before the Almighty, I will be held answerable to many questions. But what will I say when God asks—and he is certain to ask—'Shimshon, did you see my Alps?'"



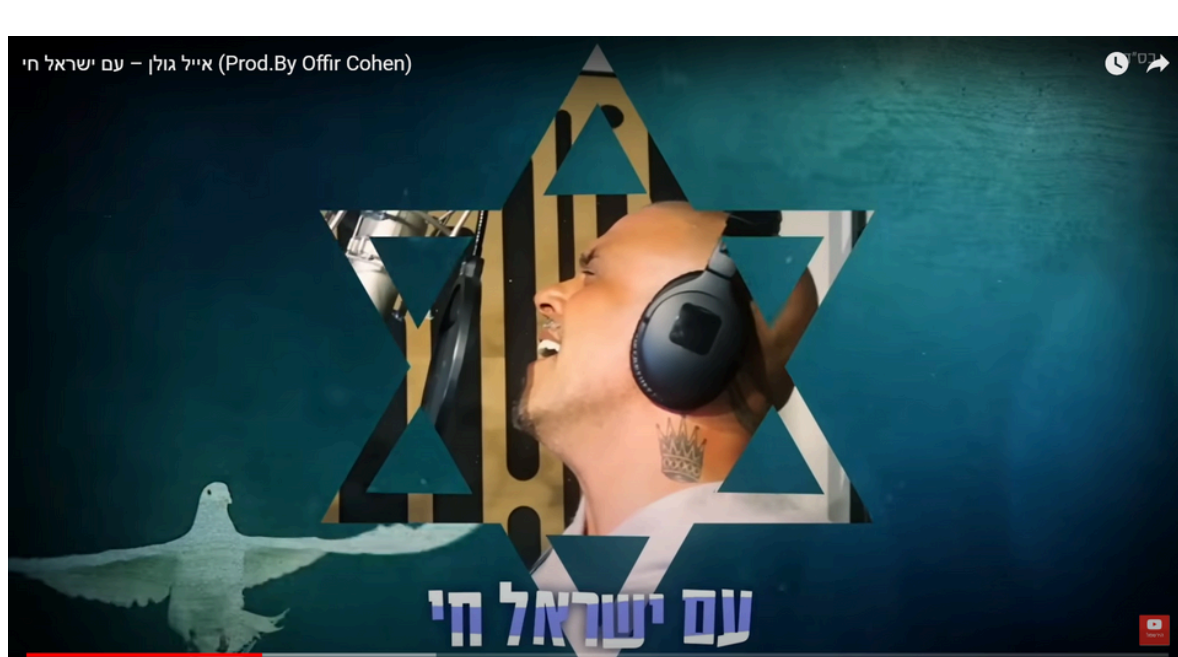
דברים ג':כ"ז

עֲלֵה | רֹאשׁ הַפְּסָגָה וּשָׂא עֵינֶיךָ יָמָה וְצַפְנָה וְתִמְנָה וּמִזְרָחָה וּרְאָה
בְּעֵינֶיךָ כִּי־לֹא תַעֲבֹר אֶת־הַיַּרְדֵּן הַזֶּה:

Go up to the summit of Pisgah and gaze about, to the west, the north, the south, and the east. Look at it well, for you shall not go across yonder Jordan.

HOW DOES SIGHT IMPACT EXPERIENCE? DOES SIGHT IMPACT THE JEWISH EXPERIENCE? THE ABILITY TO EXPERIENCE ISRAEL?

SONG ANALYSIS



WHAT IS THE MAIN IDEA OF THIS SONG IN YOUR OPINION? WHAT LYRICS CAUSE YOU TO THINK THIS? ARE THERE OTHER THEMES THAT COME UP IN THIS SONG?